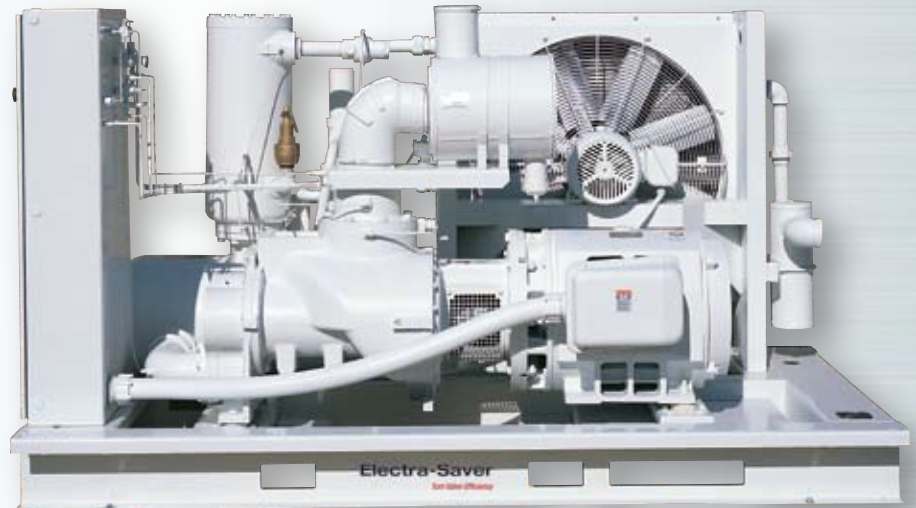


# Electra-Saver® Rotary Screw Air Compressors



125–200 HP, SAV 125/150/200  
Variable Displacement Control



#### Turn Valve Part Load Technology

- The patented Turn Valve is the most efficient part load capacity control system in the industry.
- Kypho™ rotor design, coupled with Turn Valve technology can reduce energy costs as much as 16%.
- Precision milled, robust, high strength ductile iron rotors ensure durability.

#### Direct Drive Non-Geared Airend

- Increased bearing life (L-10 life in excess of 100,000 hours) due to large tapered roller bearings.
- Permanent air end to motor connection via rigid flange connection for vibration-free operation.

#### Maintenance Reducing Design Features

- Simplified access to air/oil separator, requiring removal of only twelve bolts and no piping to change separator elements. This reduces maintenance time by 90%!
- Easy access to air filter mounted directly to the inlet valve.
- Spin-on ten micron full-flow oil filters ensure longer lubricant life and protection for all working parts.

#### Heavy Duty Inlet Air Filter

- Standard canister-type filter on Electra-Saver units; usually an option with other manufacturers.
- Removes 99.9% of airborne particulates five microns and larger.
- Extends lubricant life by almost 20%.

#### Auto Sentry® ES+ Solid State Electronic Controller

- Most sophisticated, technically advanced microprocessor based control system in the compressor industry.
- Every control option available in the industry is standard on the Gardner Denver Auto Sentry® ES+ controller.
- More self-diagnostic capability than any other rotary screw compressor.
- Built-in ability to sequence up to eight compressors.
- User friendly readout. No codes to decipher. Digital and full text Vacuum Fluorescent Display (VFD).

**GD**  
**GARDNER DENVER**

*Experience Proven Results*

# Technical Data, Direct Drive

## SAV 125–200 HP

| Motor power | Hz | Style      | Model  | Rated Pressure |      | Capacity at Rated Pressure* |                     | Approximate Dimensions |        |       |        | Net weight |                |                |
|-------------|----|------------|--------|----------------|------|-----------------------------|---------------------|------------------------|--------|-------|--------|------------|----------------|----------------|
|             |    |            |        | psig           | bar  | acfm                        | m <sup>3</sup> /min |                        | Length | Width | Height |            | with Enclosure | Less Enclosure |
| 125         | 60 | SAV 125    | EAQ    | 100            | 6.9  | 614                         | 17.39               | in                     | 114    | 68    | 69     | lb         | 5500           | 5200           |
|             |    |            |        | 125            | 8.6  | 530                         | 15.01               |                        |        |       |        |            |                |                |
|             |    |            |        | 150            | 10.3 | 445                         | 12.60               |                        |        |       |        |            |                |                |
| 125         | 60 | SAV 125 DX | EAQ    | 100            | 6.9  | 470                         | 13.31               | in                     | 114    | 68    | 69     | lb         | 5500           | 5200           |
|             |    |            |        | 110            | 7.5  | 468                         | 13.25               |                        |        |       |        |            |                |                |
|             |    |            |        | 125            | 8.6  | 465                         | 13.17               |                        |        |       |        |            |                |                |
| 125/93      | 50 | SAV 125    | EAQ    | 100            | 6.9  | 594                         | 16.82               | in                     | 114    | 68    | 69     | lb         | 5500           | 5200           |
|             |    |            |        | 125            | 8.6  | 480                         | 13.59               |                        |        |       |        |            |                |                |
|             |    |            |        | 150            | 10.3 | 418                         | 11.84               |                        |        |       |        |            |                |                |
| 150         | 60 | SAV 150    | EAQ    | 100            | 6.9  | 726                         | 20.56               | in                     | 114    | 68    | 69     | lb         | 5500           | 5200           |
|             |    |            |        | 125            | 8.6  | 608                         | 17.22               |                        |        |       |        |            |                |                |
|             |    |            |        | 150            | 10.3 | 518                         | 14.67               |                        |        |       |        |            |                |                |
| 150/112     | 50 | SAV 150    | EAQ    | 100            | 6.9  | 681                         | 19.28               | in                     | 114    | 68    | 69     | lb         | 5500           | 5200           |
|             |    |            |        | 125            | 8.6  | 590                         | 16.71               |                        |        |       |        |            |                |                |
|             |    |            |        | 150            | 10.3 | 476                         | 13.48               |                        |        |       |        |            |                |                |
| 200         | 60 | SAV 200 DX | EAQ    | 100            | 6.9  | 760                         | 21.52               | in                     | 114    | 68    | 69     | lb         | 5500           | 5200           |
|             |    |            |        | 125            | 8.6  | 752                         | 21.29               |                        |        |       |        |            |                |                |
|             |    |            |        | 150            | 10.3 | 745                         | 21.10               |                        |        |       |        |            |                |                |
| 200         | 60 | SAV 200 DD | EAU-DD | 100            | 6.9  | 974                         | 27.58               | in                     | 114    | 68    | 69     | lb         | 5500           | 5200           |
|             |    |            |        | 125            | 8.6  | 832                         | 23.56               |                        |        |       |        |            |                |                |

\* Capacity measured in accordance with CAGI/PNEUROP acceptance test code PN2CPTC2.

\*\* Noise level measured in accordance with ISO 2151.

1. Full package performance with ICFM (m<sup>3</sup>/min) measured at the terminal discharge of the package in accordance with CAGI/PNEUROP acceptance test code PN2CPTC2.
2. Dimensions shown are nominal for all unenclosed models and for quiet enclosed water cooled models. Width on all quiet enclosed air cooled models is 90" (2286 mm).
3. Weights shown are for air cooled models less shipping skid. Water cooled models weigh slightly less.

### Standard Equipment

- Automatic Turn Valve capacity control
- Direct drive, non-geared, D-flange mounted airend
- 460 volt, 3 phase, 60 HZ, 1800 RPM, 1.15 S.F., EPAct "energy efficient" ODP drive motor, or 380/415 volt, 3 phase, 50 HZ, 1500/3000 RPM, 1.15 S.F., ODP D-flange drive, Star-Delta motor with standard 5-year warranty.
- DX model includes oversized drive motor not running into the service factor at 110/125 PSIG
- Heavy duty, five micron, dry canister inlet air filter
- Airend and motor shafts coupled through a permanently aligned, resilient cushion-type flexible coupling
- Unitized airend-motor assembly mounted to the compressor base with all-angle, elastomer, vibration isolators
- Heavy duty, all welded steel base with fork lift slots

- ASME coded air/oil accumulator with Gardner Denver® Eliminator™ separator element
- Oil cooler/aftercooler:
  - Air cooled models—heavy duty radiator-type with thermally controlled, totally enclosed fan motor
  - Water cooled models—shell and tube-type heat exchanger
- Thermostatic oil mixing valve
- Package mounted moisture separator and trap
- Ten micron, full flow, oil filter
- Pressure relief valve
- Automatic blowdown valve through inlet filter
- Minimum discharge pressure/ check valve
- Stainless steel control line tubing
- Factory fill with AEON® 9000SP synthetic lubricant
- Auto-Sentry® ES+ microprocessor based, fully programmable touch pad controller with the following functions:
  - Operating mode selection: constant run, low demand with reservoir blowdown, automatic stop/start

- with timed blowdown and sequence (up to 8 units), all with modulating inlet valve or load/no load control
- Emergency stop button
- Complete system diagnostics through display
- Displays for hourmeter, loaded hours, total runtime, discharge air temperature, system/reservoir pressure, separator differential pressure and motor amps
- Advisory lamps, light yellow on diagram, displays service for air filter, change separator, oil and oil filter change, low/high temperature, sequencing communication error, and high motor amps
- Protective shutdown lamps, light red on diagram, displays high temperature, low oil pressure, main motor overload, fan motor overload, high pressure, change separator, choice of one field-selectable message: high vibration, phase relay, motor protector, low voltage
- Power interruption protection

- High speed electronic modulation control
- Thermally controlled fan motor on air cooled units
- Contacts for remote start/stop operation plus remote monitoring

### Optional Equipment

- Automatic water temperature regulator (on water cooled units)
- Magnetic water control valve (on water cooled units)
- NEMA 4 (IP 66) control enclosure
- Seacoast (air-cooled) or Saltwater (water-cooled) coolers
- Remote or remote elevated air cooled oil cooler and aftercooler
- Full acoustic enclosure with access doors
- Alternate voltages, TEFC and high efficiency motors
- Factory fill AEON® 6000FG Food Grade Lubricant
- Factory fill AEON® 9000TH High Temperature Lubricant
- Factory fill AEON® BIO Biodegradable Lubricant

# Gardner Denver®

www.GardnerDenverProducts.com maggie@gardnerdenver.com

Gardner Denver Compressor Division 1800 Gardner Expressway, Quincy, IL 62305  
Customer Service Department Telephone: (800) 682-9868 FAX: (217) 224-7814

©2009 Gardner Denver, Inc. Litho in U.S.A. GS-SAV-125-200 1st Ed. 3/09



Member

